

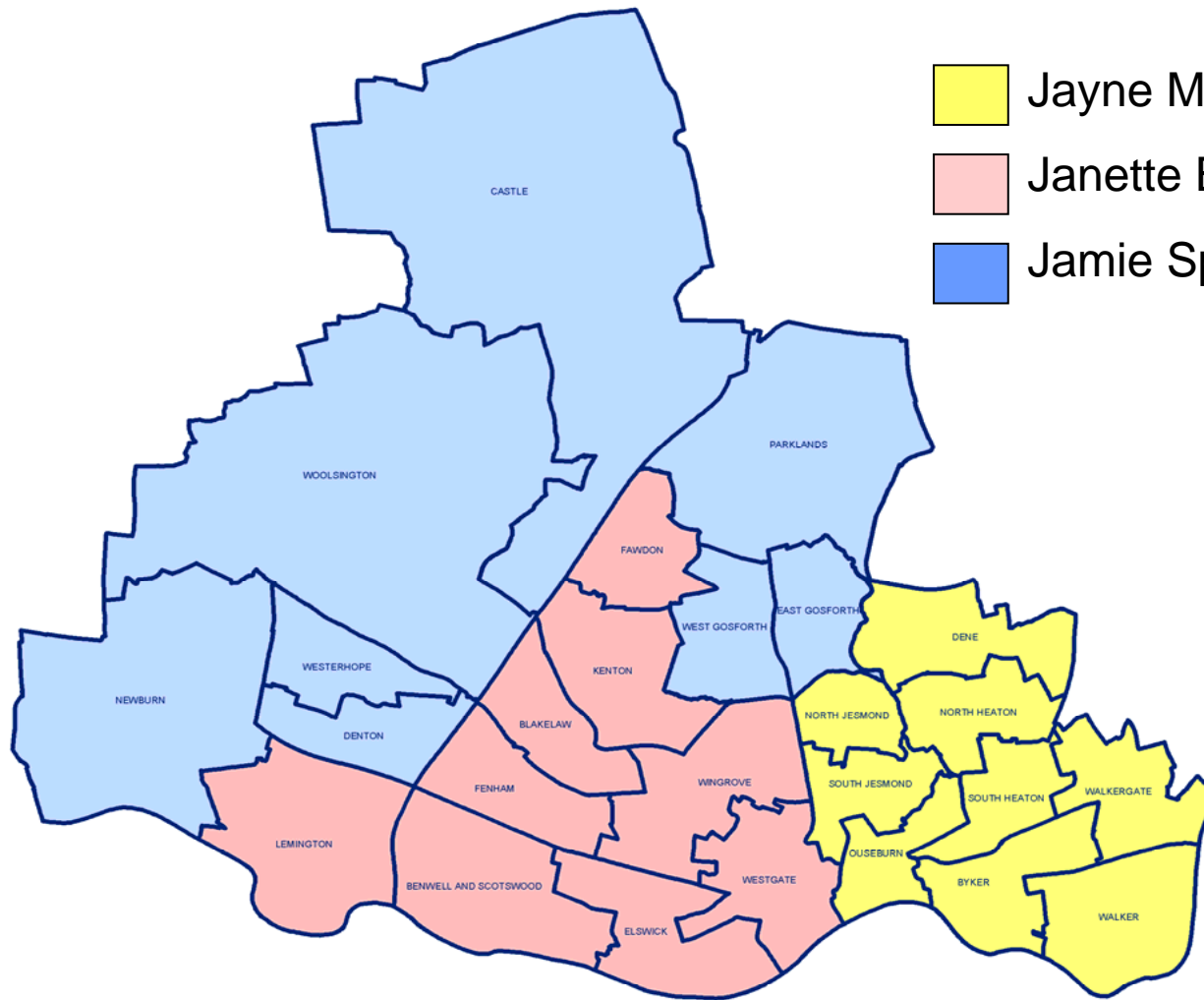
# Working in Localities

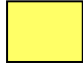


**Jayne Moules, Area Locality Manager**  
**Janette Brown, Area Locality Manager**

# The Rationale for Locality Working

- Newcastle Plan for Children and Young People
- Children and Young People's Strategic Partnership
- Transforming Outcomes Programme
- Integrated Children's Services

# Area Locality Managers



-  Jayne Moules – 07969 795 904
-  Janette Brown – 07969 795 875
-  Jamie Spence – In post from 2<sup>nd</sup> May 2007

# Locality Manager Role

- Initially developmental
- Work in progress .... a **facilitation** role
- Emphasis on integrating services to strengthen early intervention and prevention
- Build upon existing work: extended services through schools, children's centres etc
- Resource to support and help make sense of the change process

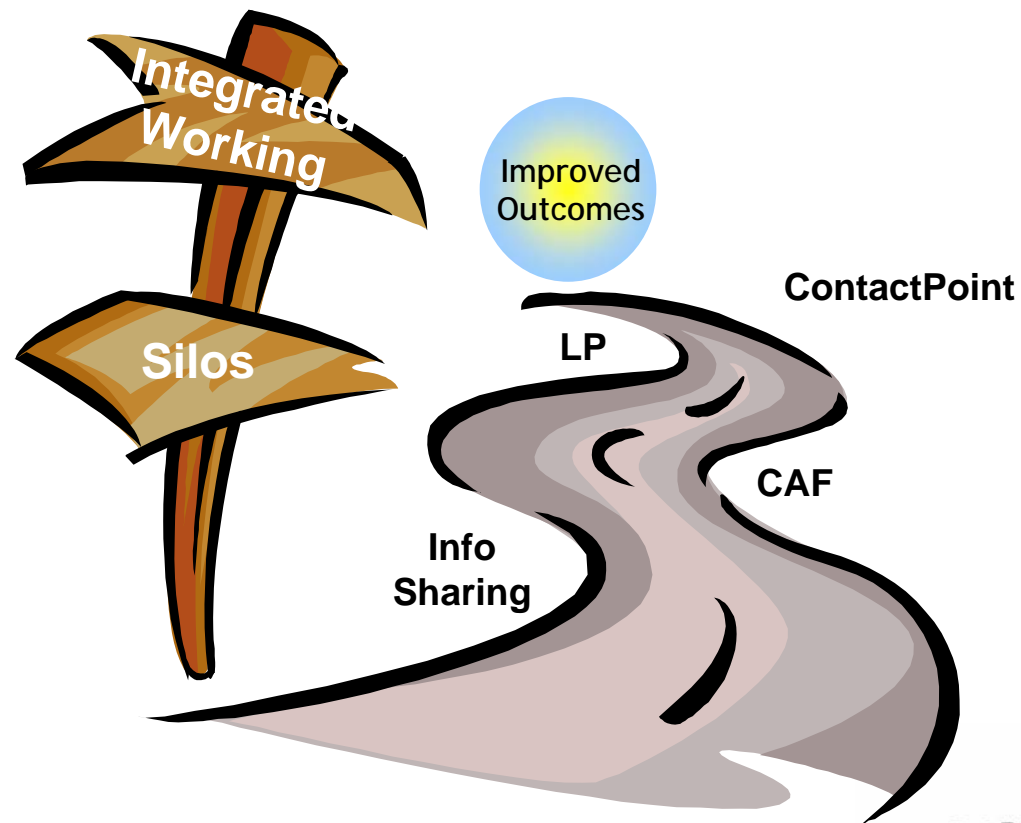
# Implementing Integrated Working

## Implementing integrated working:

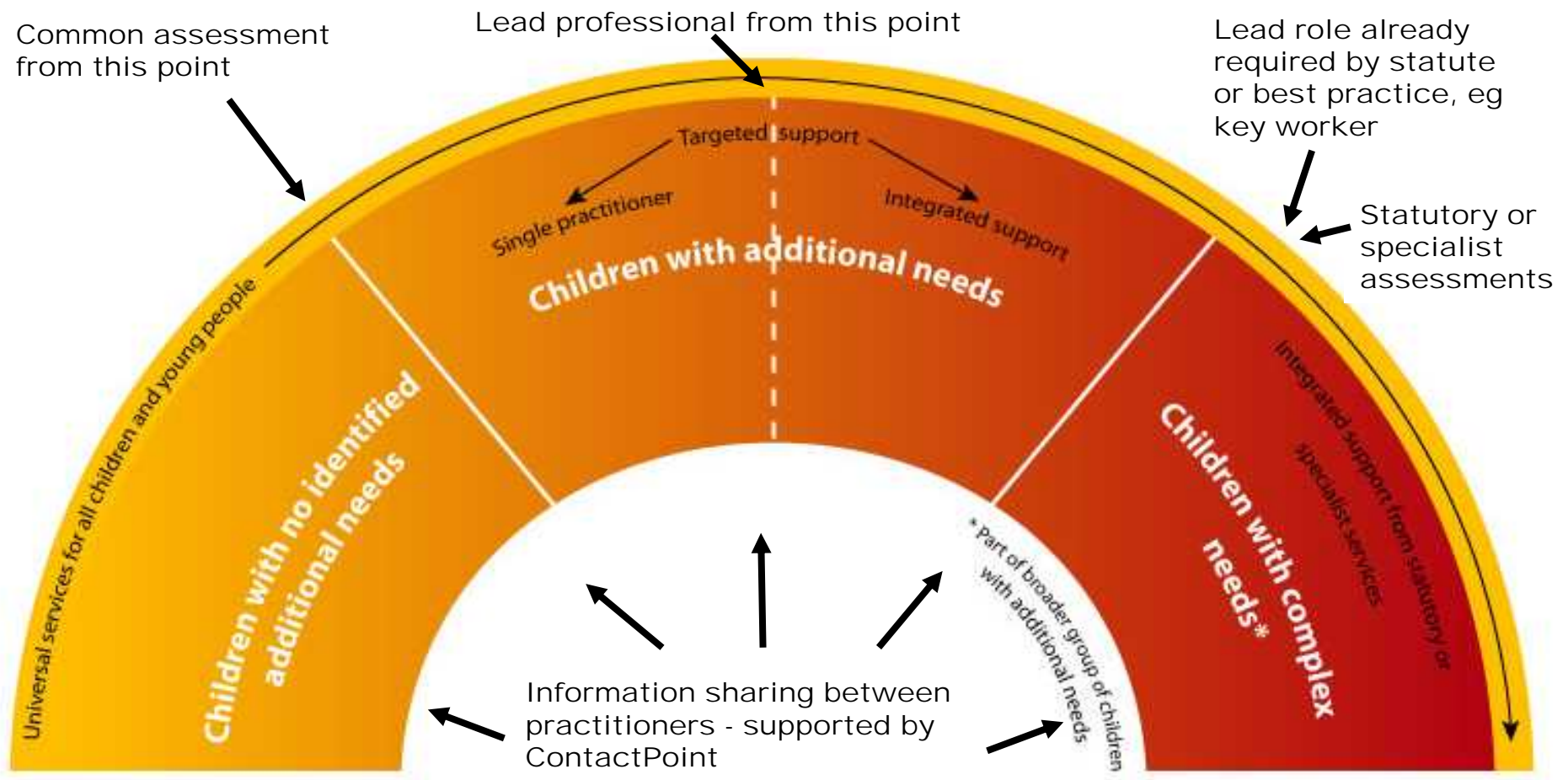
- means implementing **Integrated Processes** and **Integrated Front-Line Delivery** of services that work with, help and support children and young people in all aspects of their lives.
- **LA's must take a lead** in making arrangements to promote co-operation between local agencies = locality managers;
- **Relevant partners have a duty to co-operate** in making these arrangements; and
- co-operation arrangements must encompass a **much wider group of partners** to achieve their full potential.



# Integration Implementation Roadmap



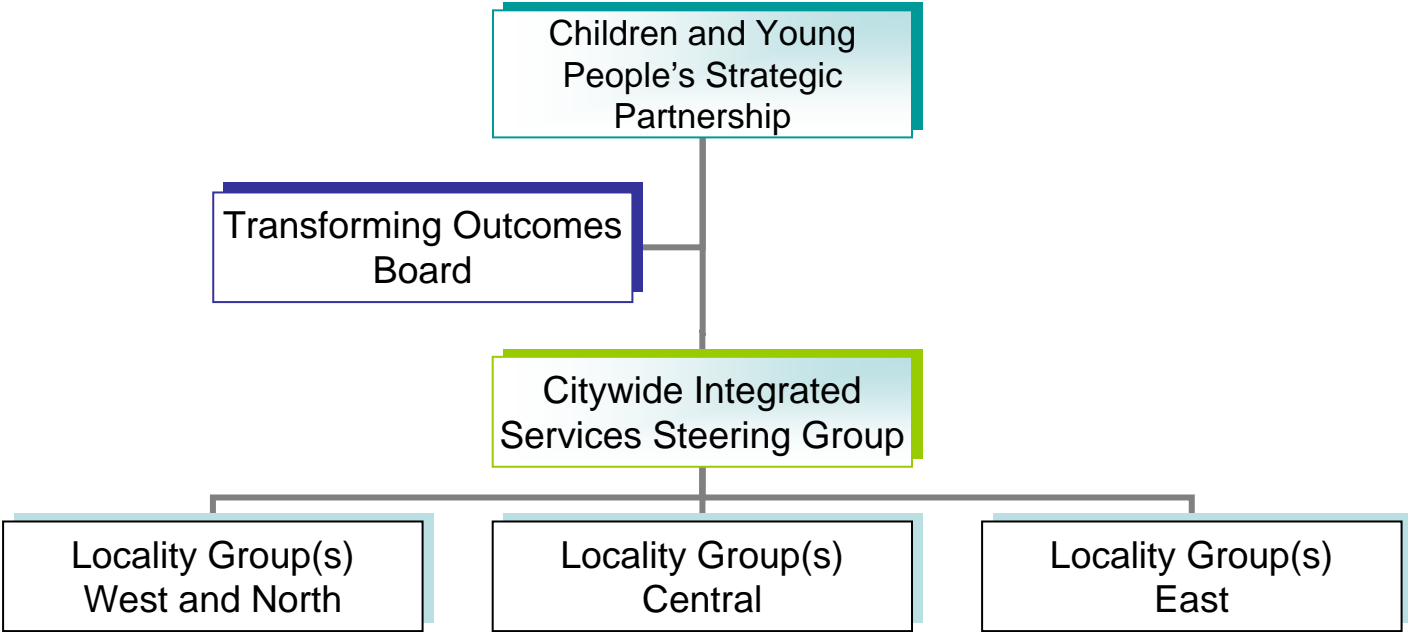
# The Focus of These Tools Is Early Intervention and Prevention



# Making It Happen

- Development of a process/pathway to integrated front line delivery
- Building locality identities – opportunities for joint:
  - Planning
  - Training
  - Problem solving
- Culture change takes time
- But it's already happening, and we need you to be involved

# Moving Integration in Localities Forward



# Citywide Steering Group Membership

- Headteachers
- Primary Care Trust
- Newcastle Hospitals Trust
- Social Care
- Education Welfare
- Connexions
- Play and Youth
- Police
- Parenting Rep
- Children's Centres
- Extended Schools
- Housing
- Voluntary and Community Sector

# Locality Group Membership

- Managers of services in the locality with decision-making powers to allocate funding and reshape services:
  - Headteachers
  - Health Co-ordinators
  - Education Welfare Service
  - Police
  - Planning and Commissioning Managers
  - Neighbourhood Services
  - Connexions
  - Play and Youth
  - VCS Reps
  - Parenting
  - Associate practitioners as and when

# Wider Engagement of Practitioners and Other Stakeholders

- Quarterly network for practitioners and other stakeholders
- Development of networks for children and young people and parents and carers building on:
  - School Councils
  - Ward Young People's Forums
  - Investing in Children
  - Children Decide Groups
  - Ward Committees
  - Parenting work
  - Children's Centres and Schools

# Draft Timeline

Activity	Feb	Mar	Apr	May	Jun	Jul	Aug	Sep	Oct	Nov	Dec	Jan	Feb	Mar
Develop draft proposals	Grey	Grey												
Consult on draft proposals	Grey	Grey												
Issue invitation letters to Citywide group		Blue												
Organise meetings		Grey	Grey											
Hold first Citywide Meetings			Blue	Blue	Blue									
Development of implementation plan			Grey	Grey	Grey	Grey	Grey	Grey						
On-going Consultation in Localities			Grey	Grey	Grey	Grey	Grey	Grey	Grey					
Locality Groups meet									Blue	Blue				
Plan for wider Locality Groups									Grey	Grey	Grey			
Wider Locality Groups meet												Blue	Blue	

# What's in it for the Children and Young People?

- Shift in focus to prevention and early intervention and effective prevention
- Resulting in improved outcomes
- Support from a whole range of providers coordinated around the needs of the child
- Opportunities for joint problem solving to remove barriers to achievement of individual and groups of children and young people



everychild  
matters