

Newcastle Children's Services Performance Profile: historical data

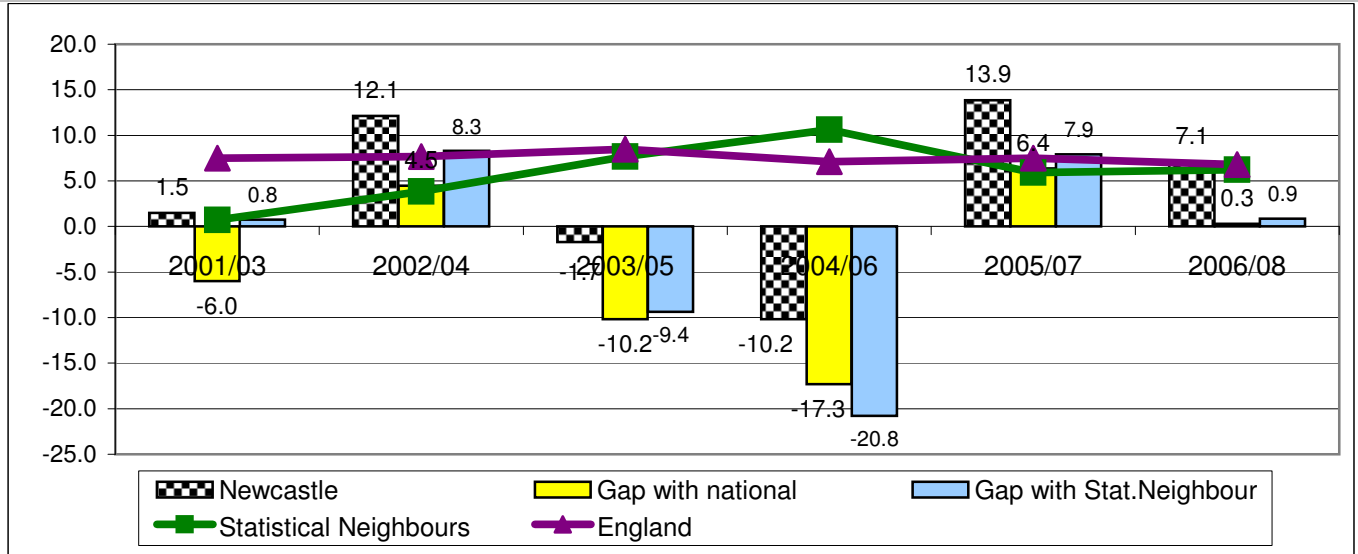
Every Child Matters indicators: National Indicator Set for Staying Safe

Local Authority: Newcastle upon Tyne Reporting Date: 31st December 2009

NI 48 Children killed or seriously injured in road traffic accidents (% reduction based on 3 year rolling average)

Interpretation: good performance is typified by a positive percentage change

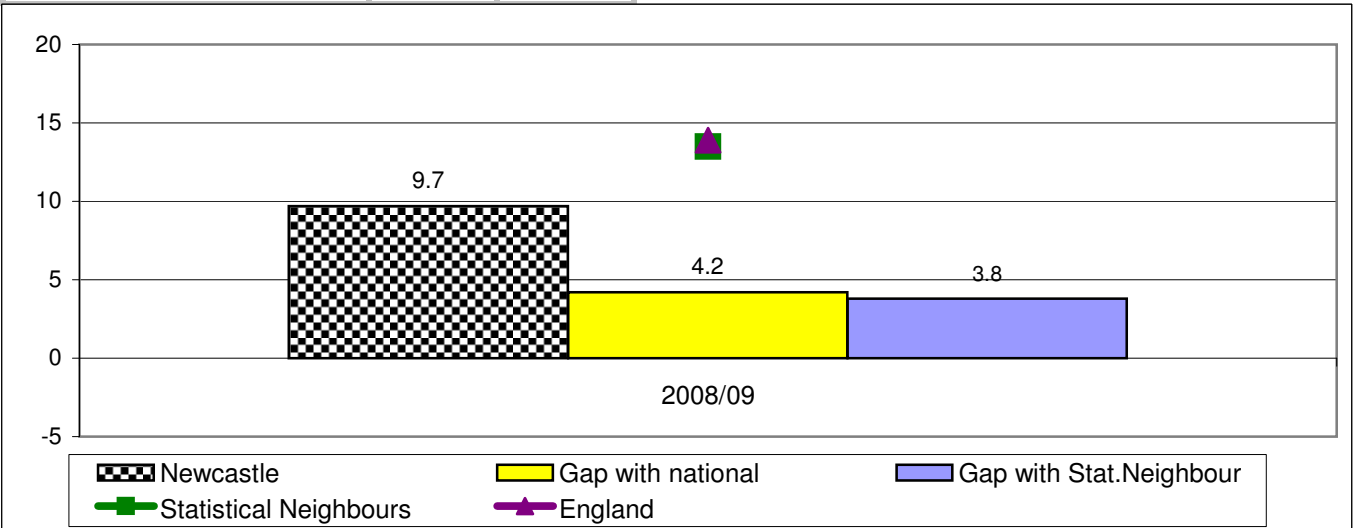
Data On Previous Years	2001/03	2002/04	2003/05	2004/06	2005/07	2006/08	2007/09*
Newcastle	1.5	12.1	-1.7	-10.2	13.9	7.1	
Statistical Neighbours	0.7	3.8	7.7	10.6	5.9	6.2	
England	7.5	7.7	8.5	7.1	7.5	6.8	
Gap (Newcastle - England)	-6.0	4.5	-10.2	-17.3	6.4	0.3	
Gap (Newcastle - stat.neigh.)	0.8	8.3	-9.4	-20.8	7.9	0.9	



NI 58 Emotional and behavioural health of children in care

Interpretation: good performance is typified by a low number

Data On Previous Years	2008/09	2009/10*
Newcastle	9.7	-
Statistical Neighbours	13.5	-
England	13.9	-
Gap (Newcastle - England)	4.2	-
Gap (Newcastle - stat.neigh.)	3.8	-



Newcastle Children's Services Performance Profile: historical data

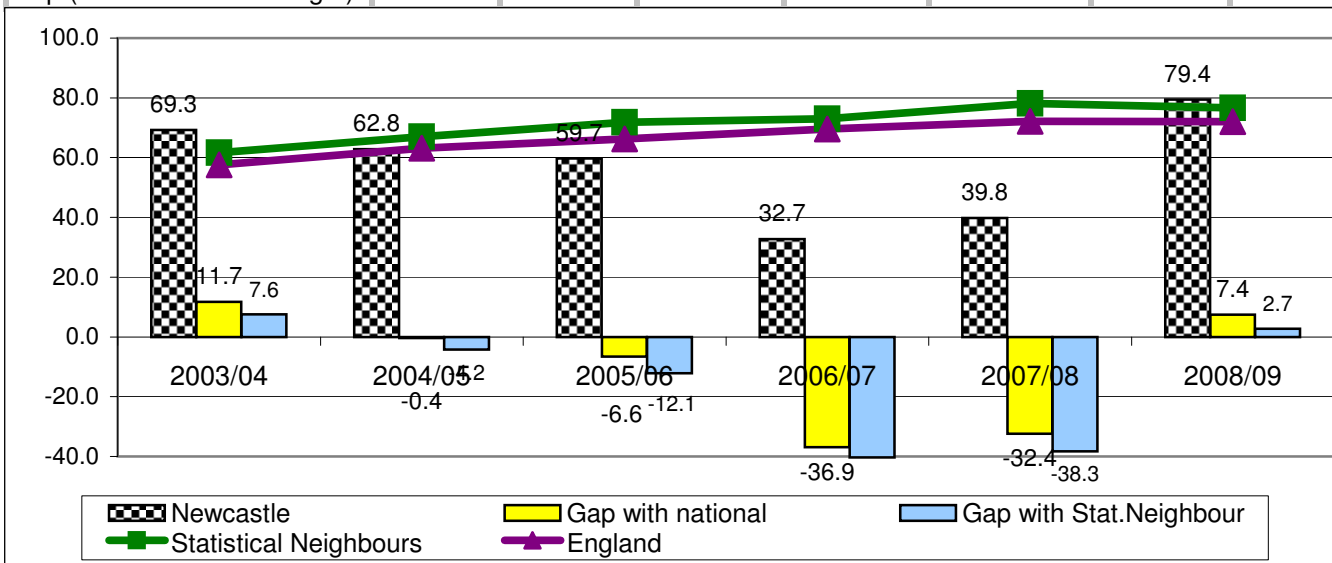
Every Child Matters indicators: National Indicator Set for Staying Safe

Local Authority: Newcastle upon Tyne Reporting Date: 31st December 2009

NI 59 Initial assessments for children's social care carried out within 7 working days of referral (2020 SC)

Interpretation: good performance is typified by a higher percentage

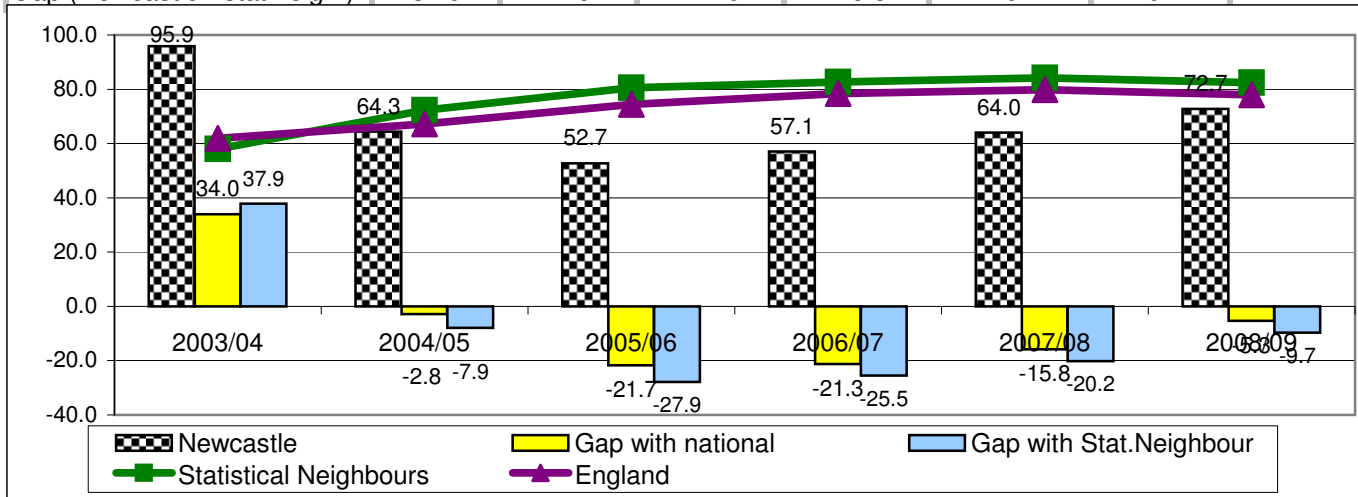
Data On Previous Years	2003/04	2004/05	2005/06	2006/07	2007/08	2008/09	2009/10*
Newcastle	69.3	62.8	59.7	32.7	39.8	79.4	
Statistical Neighbours	61.7	67.0	71.8	73.0	78.1	76.7	
England	57.6	63.2	66.3	69.6	72.2	72.0	
Gap (Newcastle - England)	11.7	-0.4	-6.6	-36.9	-32.4	7.4	
Gap (Newcastle - stat.neigh.)	7.6	-4.2	-12.1	-40.3	-38.3	2.7	



NI 60 Core assessments for children's social care that were carried out within 35 working days of their commencement (PAF CF/C64)

Interpretation: good performance is typified by a higher percentage (using PAF bandings)

Data On Previous Years	2003/04	2004/05	2005/06	2006/07	2007/08	2008/09	2009/10*
Newcastle	95.9	64.3	52.7	57.1	64.0	72.7	
Statistical Neighbours	58.0	72.2	80.6	82.6	84.2	82.4	
England	61.9	67.2	74.4	78.4	79.8	78.0	
Gap (Newcastle - England)	34.0	-2.8	-21.7	-21.3	-15.8	-5.3	
Gap (Newcastle - stat.neigh.)	37.9	-7.9	-27.9	-25.5	-20.2	-9.7	



Newcastle Children's Services Performance Profile: historical data

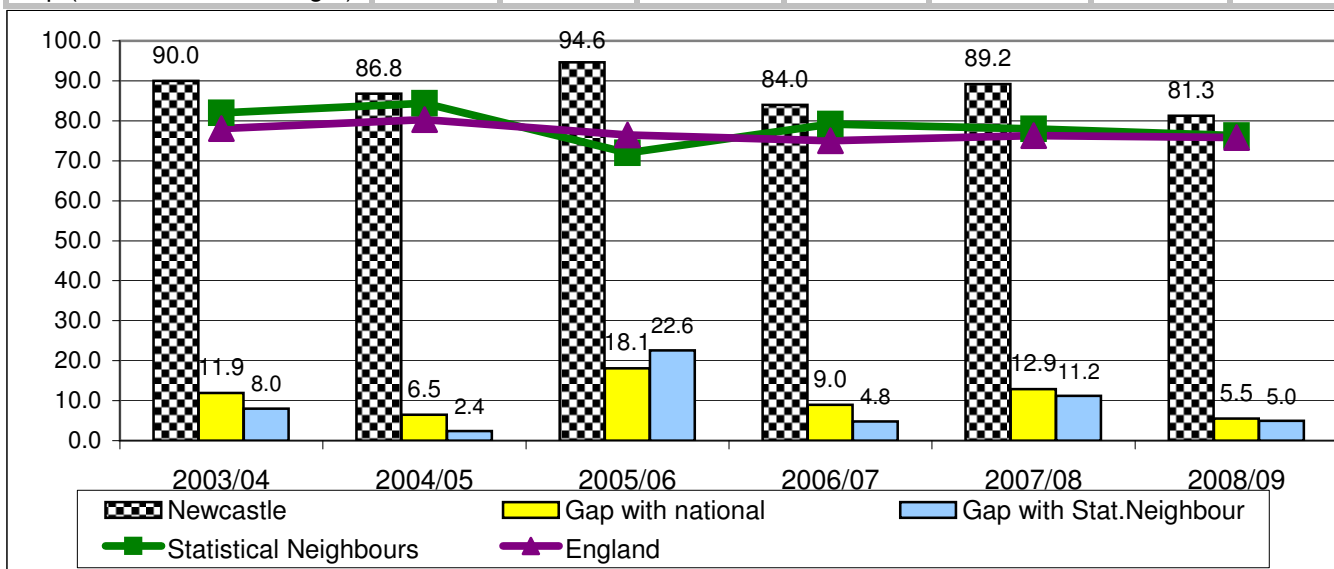
Every Child Matters indicators: National Indicator Set for Staying Safe

Local Authority: Newcastle upon Tyne Reporting Date: 31st December 2009

NI 61 Stability of looked after children adopted following an agency decision that the child should be placed for adoption (2058SC)

Interpretation: good performance is typified by a higher percentage

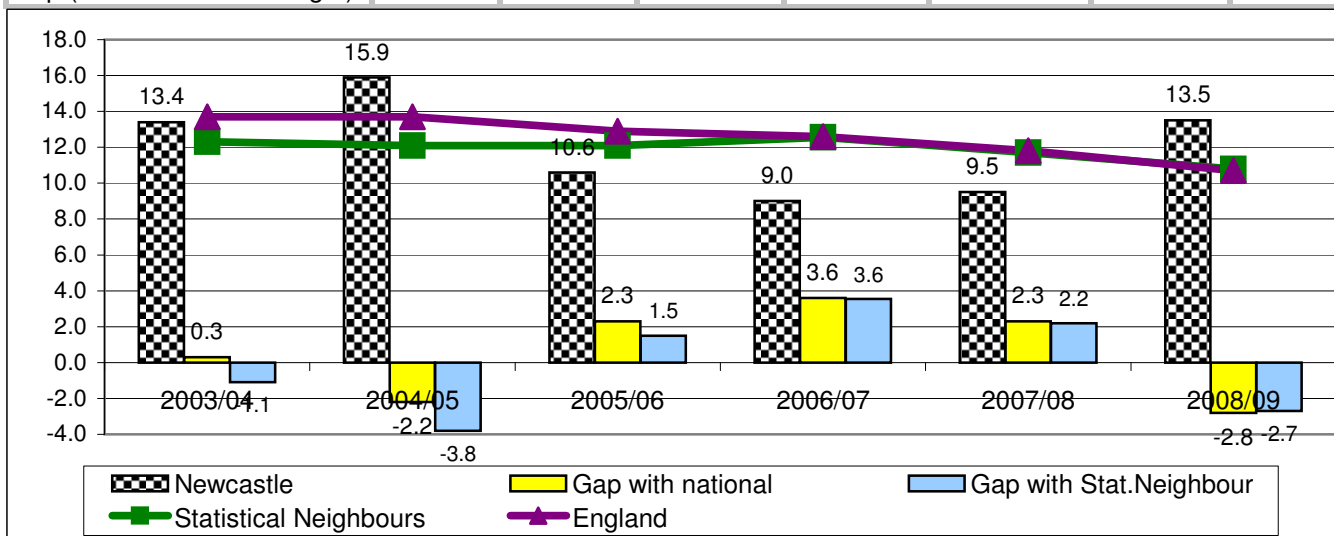
Data On Previous Years	2003/04	2004/05	2005/06	2006/07	2007/08	2008/09	2009/10*
Newcastle	90.0	86.8	94.6	84.0	89.2	81.3	
Statistical Neighbours	82.0	84.4	72.0	79.2	78.0	76.3	
England	78.1	80.3	76.5	75.0	76.3	75.8	
Gap (Newcastle - England)	11.9	6.5	18.1	9.0	12.9	5.5	
Gap (Newcastle - stat.neigh.)	8.0	2.4	22.6	4.8	11.2	5.0	



NI 62 Stability of placements of looked after children: number of moves (PAF CF/A1, BVPI 49)

Interpretation: good performance is typified by a lower percentage (using PAF bandings)

Data On Previous Years	2003/04	2004/05	2005/06	2006/07	2007/08	2008/09	2009/10*
Newcastle	13.4	15.9	10.6	9.0	9.5	13.5	
Statistical Neighbours	12.3	12.1	12.1	12.6	11.7	10.8	
England	13.7	13.7	12.9	12.6	11.8	10.7	
Gap (Newcastle - England)	0.3	-2.2	2.3	3.6	2.3	-2.8	
Gap (Newcastle - stat.neigh.)	-1.1	-3.8	1.5	3.6	2.2	-2.7	



Newcastle Children's Services Performance Profile: historical data

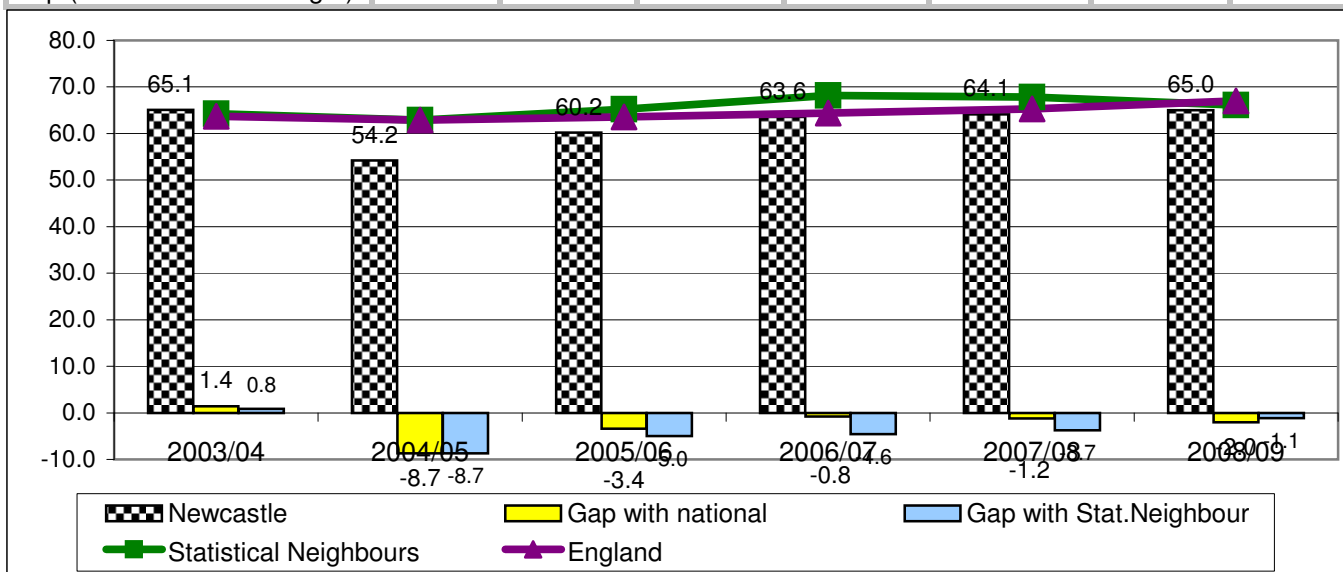
Every Child Matters indicators: National Indicator Set for Staying Safe

Local Authority: Newcastle upon Tyne Reporting Date: 31st December 2009

NI 63 Stability of placements of looked after children: length of placement* (PAF CF/D78)

Interpretation: good performance is typified by a higher percentage

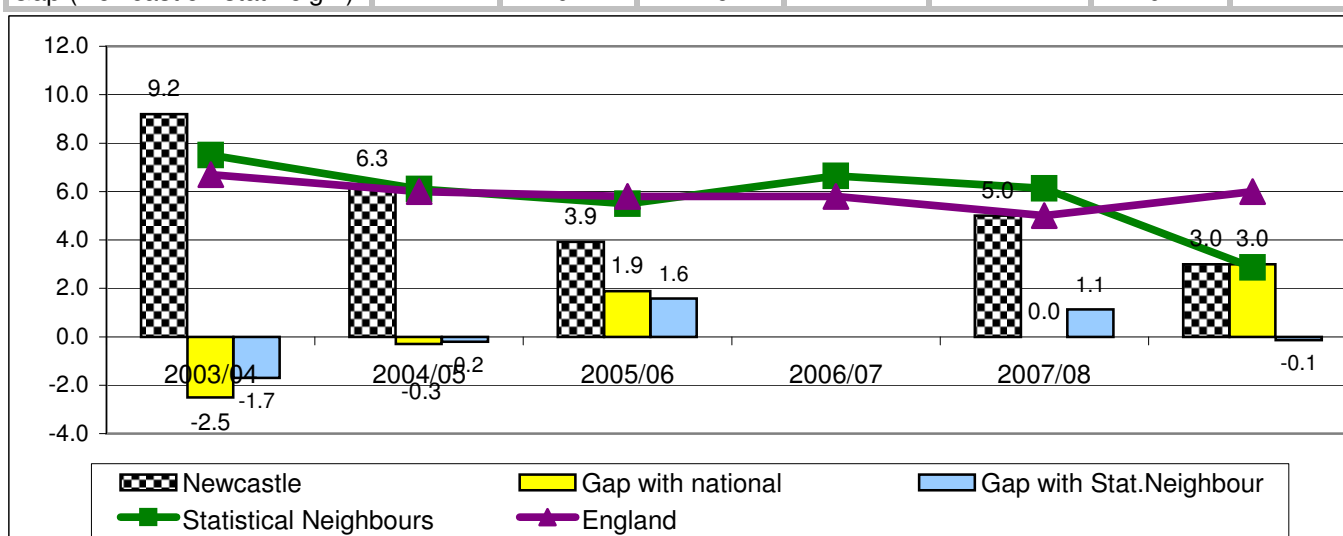
Data On Previous Years	2003/04	2004/05	2005/06	2006/07	2007/08	2008/09	2009/10*
Newcastle	65.1	54.2	60.2	63.6	64.1	65.0	
Statistical Neighbours	64.3	62.9	65.2	68.2	67.8	66.1	
England	63.7	62.9	63.6	64.4	65.3	67.0	
Gap (Newcastle - England)	1.4	-8.7	-3.4	-0.8	-1.2	-2.0	
Gap (Newcastle - stat.neigh.)	0.8	-8.7	-5.0	-4.6	-3.7	-1.1	



NI 64 Child protection plans lasting 2 years or more* (PAF CF/C21)

Interpretation: good performance is typified by a lower percentage

Data On Previous Years	2003/04	2004/05	2005/06	2006/07	2007/08	2008/09	2009/10*
Newcastle	9.2	6.3	3.9		5.0	3.0	
Statistical Neighbours	7.5	6.1	5.5	6.6	6.1	2.9	
England	6.7	6.0	5.8	5.8	5.0	6.0	
Gap (Newcastle - England)	-2.5	-0.3	1.9		0.0	3.0	
Gap (Newcastle - stat.neigh.)	-1.7	-0.2	1.6		1.1	-0.1	



Newcastle Children's Services Performance Profile: historical data

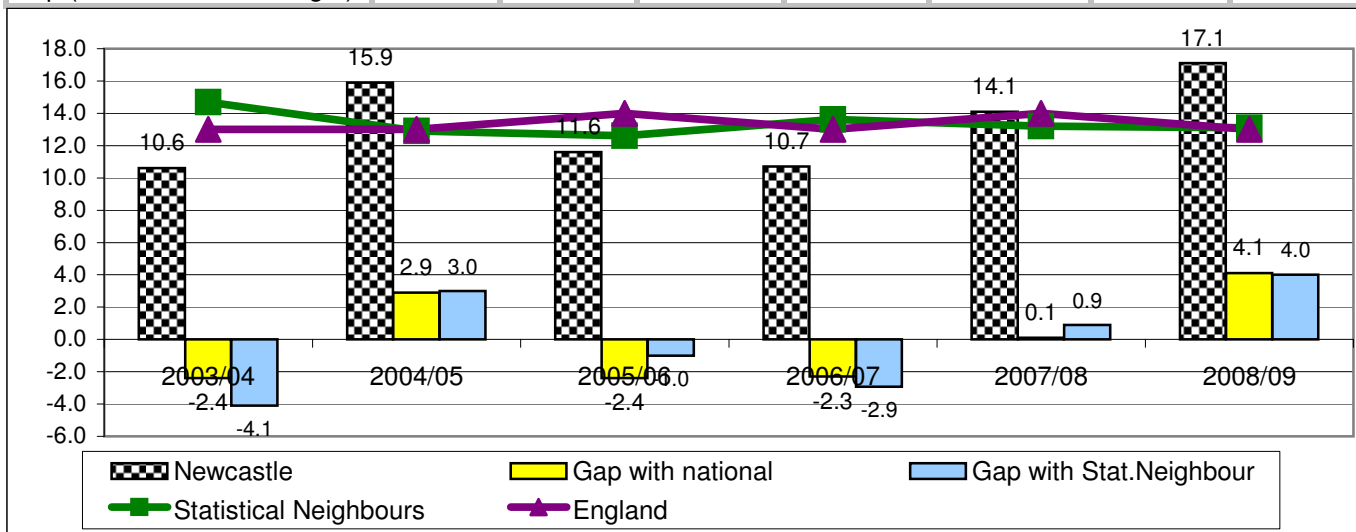
Every Child Matters indicators: National Indicator Set for Staying Safe

Local Authority: Newcastle upon Tyne Reporting Date: 31st December 2009

NI 65 Children becoming the subject of a Child Protection Plan for a second or subsequent time (PAF CF/A3)

Interpretation: good performance is described as being between 10% and 15% (PAF banding)

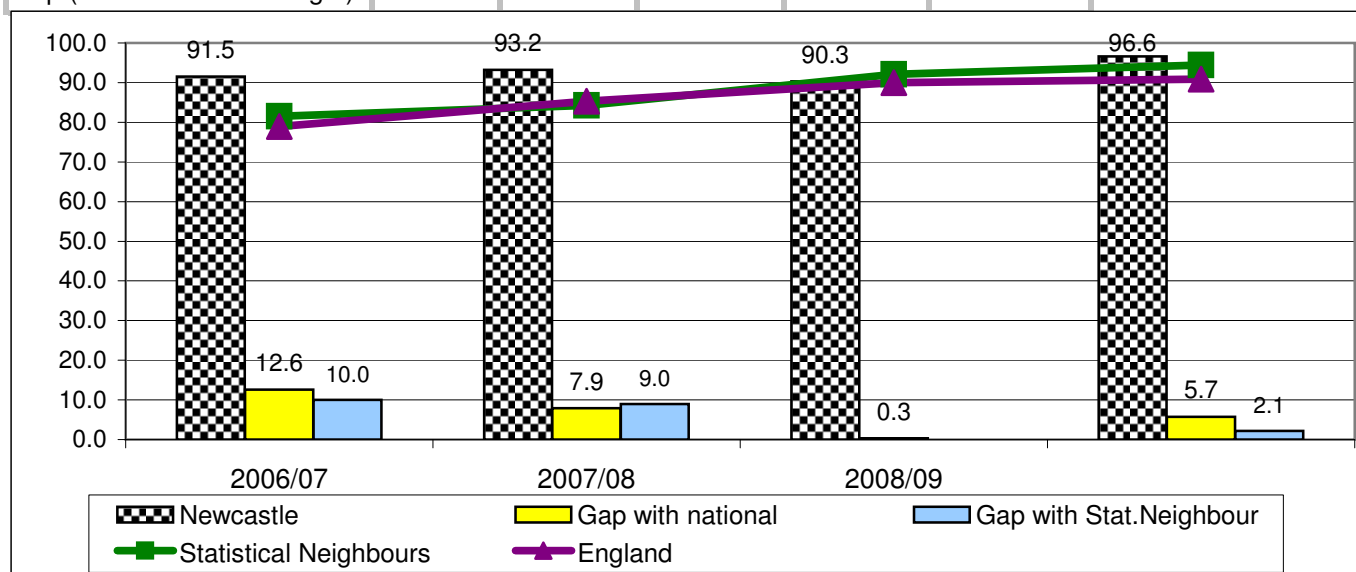
Data On Previous Years	2003/04	2004/05	2005/06	2006/07	2007/08	2008/09	2009/10*
Newcastle	10.6	15.9	11.6	10.7	14.1	17.1	
Statistical Neighbours	14.7	12.9	12.6	13.6	13.2	13.1	
England	13.0	13.0	14.0	13.0	14.0	13.0	
Gap (Newcastle - England)	-2.4	2.9	-2.4	-2.3	0.1	4.1	
Gap (Newcastle - stat.neigh.)	-4.1	3.0	-1.0	-2.9	0.9	4.0	



NI 66 Looked after children cases which were reviewed within required timescales (CF / CF68)

Interpretation: good performance is typified by a higher percentage

Data On Previous Years	2005/06	2006/07	2007/08	2008/09	2009/10*
Newcastle	91.5	93.2	90.3	96.6	
Statistical Neighbours	81.5	84.2	92.1	94.5	
England	78.9	85.3	90.0	90.9	
Gap (Newcastle - England)	12.6	7.9	0.3	5.7	
Gap (Newcastle - stat.neigh.)	10.0	9.0	-1.8	2.1	



Newcastle Children's Services Performance Profile: historical data

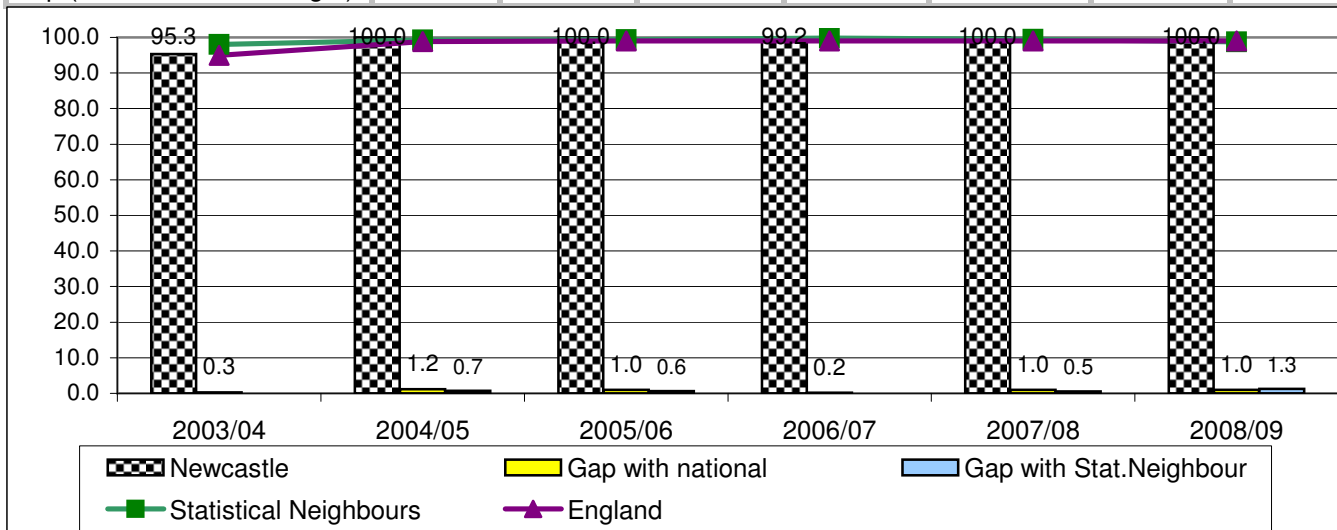
Every Child Matters indicators: National Indicator Set for Staying Safe

Local Authority: Newcastle upon Tyne Reporting Date: 31st December 2009

NI 67 Child protection cases which were reviewed within required timescales (PAF CF/C20)

Interpretation: good performance is typified by a higher percentage

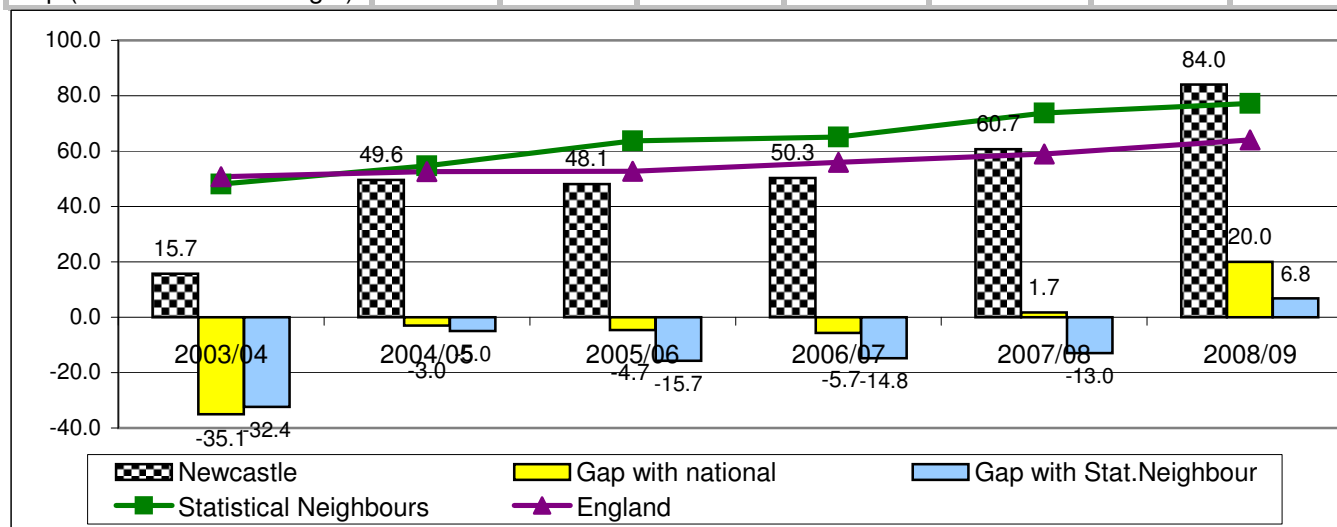
Data On Previous Years	2003/04	2004/05	2005/06	2006/07	2007/08	2008/09	2009/10*
Newcastle	95.3	100.0	100.0	99.2	100.0	100.0	
Statistical Neighbours	98.0	99.3	99.4	99.8	99.5	98.7	
England	95.0	98.8	99.0	99.0	99.0	99.0	
Gap (Newcastle - England)	0.3	1.2	1.0	0.2	1.0	1.0	
Gap (Newcastle - stat.neigh.)	-2.7	0.7	0.6	-0.6	0.5	1.3	



NI 68 Referrals to children's social care going on to initial assessment (2017SC)

Interpretation: Difficult to quantify whether good performance is typified by high or lower numbers. Ideal should be a median % band that all LA's fall within.

Data On Previous Years	2003/04	2004/05	2005/06	2006/07	2007/08	2008/09	2009/10*
Newcastle	15.7	49.6	48.1	50.3	60.7	84.0	
Statistical Neighbours	48.1	54.6	63.8	65.1	73.7	77.2	
England	50.8	52.6	52.7	56.0	59.0	64.0	
Gap (Newcastle - England)	-35.1	-3.0	-4.7	-5.7	1.7	20.0	
Gap (Newcastle - stat.neigh.)	-32.4	-5.0	-15.7	-14.8	-13.0	6.8	



Newcastle Children's Services Performance Profile: historical data

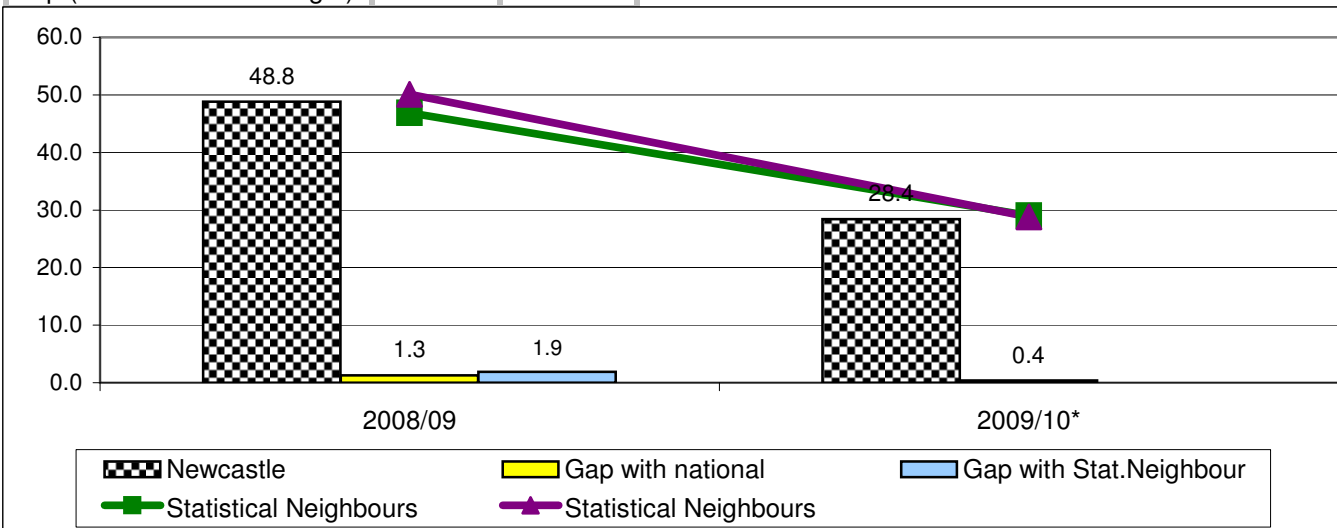
Every Child Matters indicators: National Indicator Set for Staying Safe

Local Authority: Newcastle upon Tyne Reporting Date: 31st December 2009

NI 69 Children who have experienced bullying

Interpretation: good performance is typified by a lower percentage

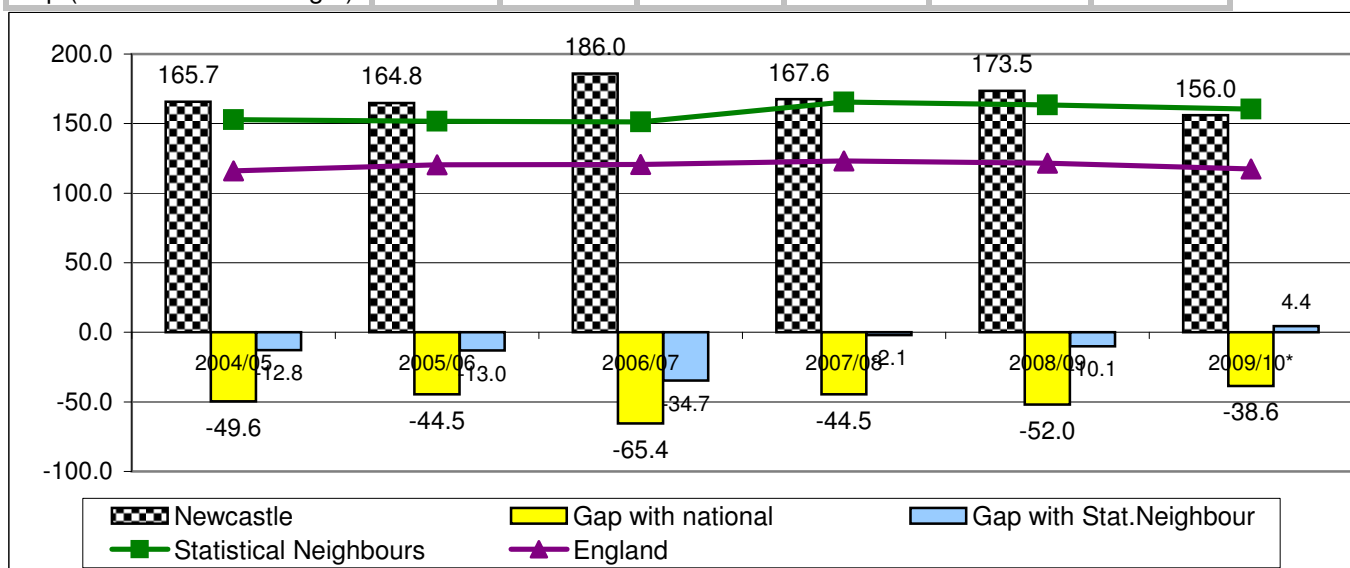
Data On Previous Years	2008/09	2009/10*
Newcastle	48.8	28.4
Statistical Neighbours	46.9	29.0
England	50.1	28.8
Gap (Newcastle - England)	1.3	0.4
Gap (Newcastle - stat.neigh.)	1.9	-0.6



NI 70 Hospital admissions caused by unintentional and deliberate injuries to children and young people

Interpretation: good performance is typified by a lower rates

Data On Previous Years	2004/05	2005/06	2006/07	2007/08	2008/09	2009/10*
Newcastle	165.7	164.8	186.0	167.6	173.5	156.0
Statistical Neighbours	152.9	151.8	151.3	165.5	163.4	160.4
England	116.1	120.3	120.6	123.1	121.5	117.4
Gap (Newcastle - England)	-49.6	-44.5	-65.4	-44.5	-52.0	-38.6
Gap (Newcastle - stat.neigh.)	-12.8	-13.0	-34.7	-2.1	-10.1	4.4



Newcastle Children's Services Performance Profile: historical data

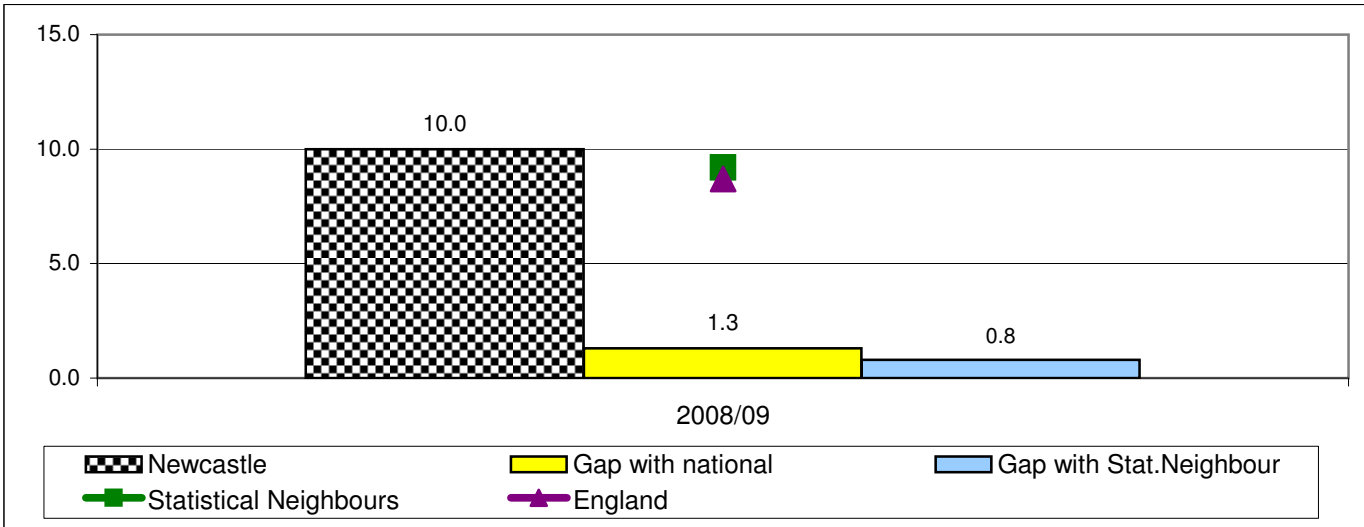
Every Child Matters indicators: National Indicator Set for Staying Safe

Local Authority: Newcastle upon Tyne Reporting Date: 31st December 2009

NI 71 Children who have run away from home/care overnight (Self-Evaluation overall scores for measures to monitor, respond to and address young runaway cases)

Interpretation: good performance is typified by a higher number

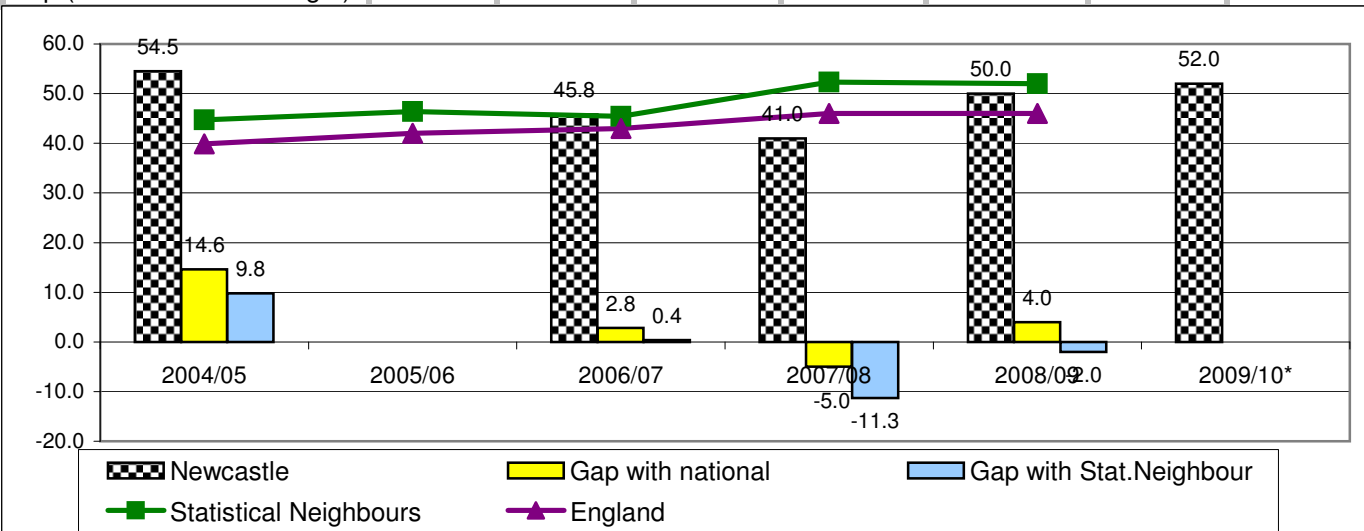
Data On Previous Years	2008/09	2009/10*
Newcastle	10.0	-
Statistical Neighbours	9.2	-
England	8.7	-
Gap (Newcastle - England)	1.3	-
Gap (Newcastle - stat.neigh.)	0.8	-



NI 99 Children in care reaching level 4 in English at Key Stage 2

Interpretation: good performance is typified by a higher percentage

Data On Previous Years	2004/05	2005/06	2006/07	2007/08	2008/09	2009/10*
Newcastle	54.5		45.8	41.0	50.0	52.0
Statistical Neighbours	44.7	46.4	45.4	52.3	52.0	-
England	39.9	42.0	43.0	46.0	46.0	-
Gap (Newcastle - England)	14.6		2.8	-5.0	4.0	-
Gap (Newcastle - stat.neigh.)	9.8		0.4	-11.3	-2.0	-



Newcastle Children's Services Performance Profile: historical data

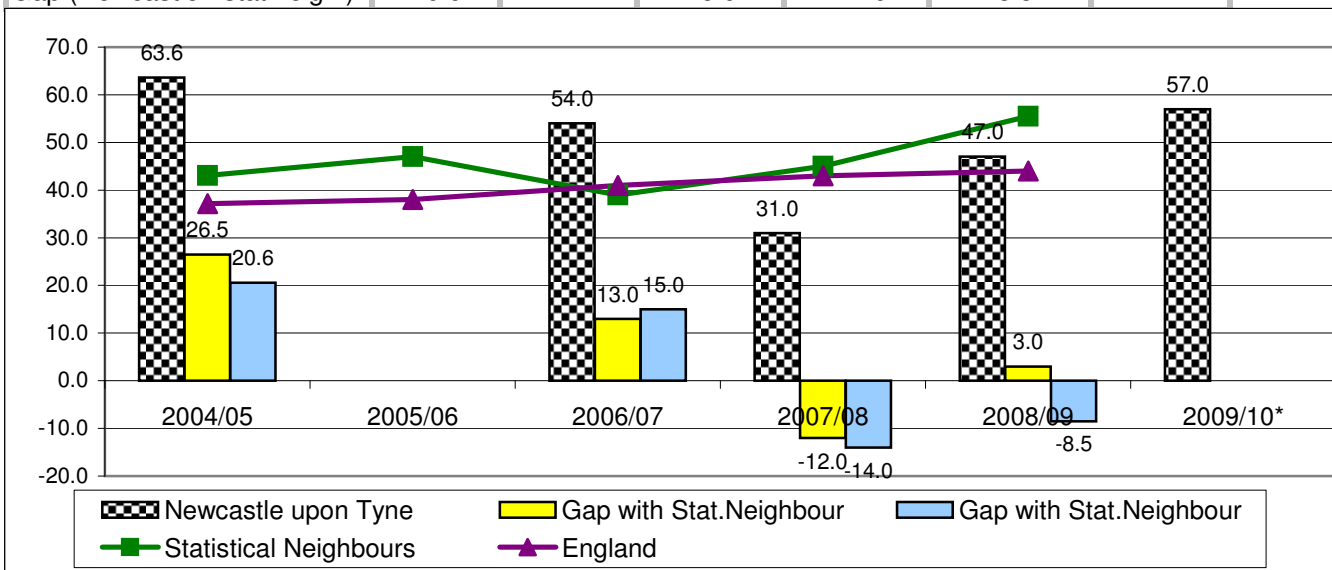
Every Child Matters indicators: National Indicator Set for Staying Safe

Local Authority: Newcastle upon Tyne Reporting Date: 31st December 2009

NI 100 Children in care reaching level 4 in Maths at Key Stage 2

Interpretation: good performance is typified by a higher percentage

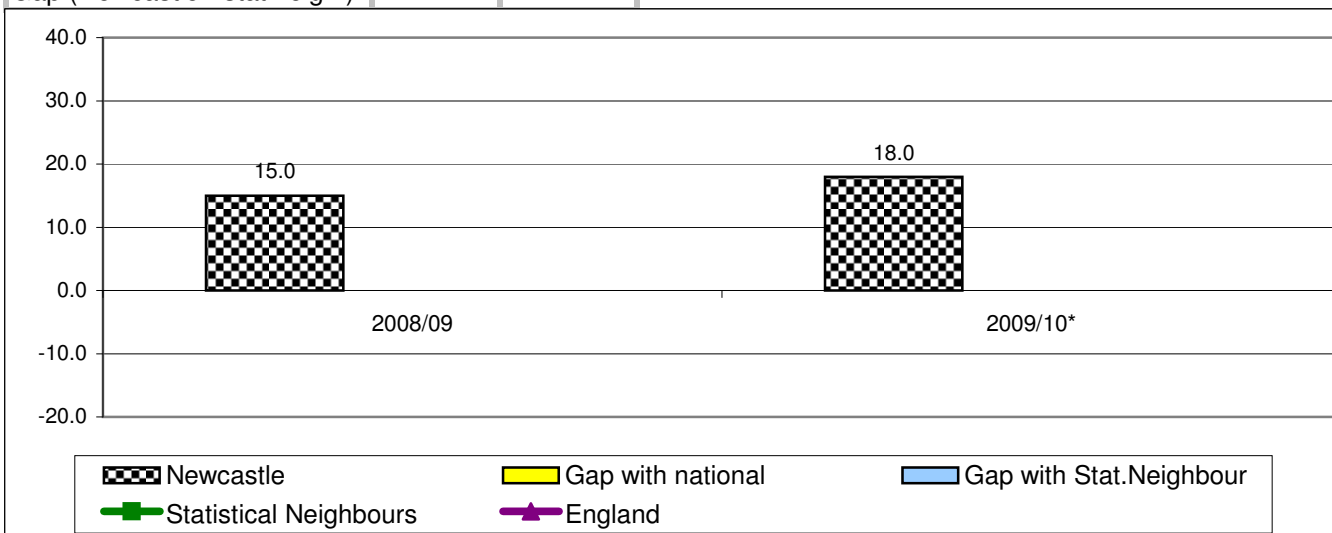
Data On Previous Years	2004/05	2005/06	2006/07	2007/08	2008/09	2009/10*
Newcastle upon Tyne	63.6		54.0	31.0	47.0	57.0
Statistical Neighbours	43.1	47.0	39.0	45.0	55.5	-
England	37.2	38.0	41.0	43.0	44.0	-
Gap (Newcastle - England)	26.5		13.0	-12.0	3.0	-
Gap (Newcastle - stat.neigh.)	20.6		15.0	-14.0	-8.5	-



NI 101 Children in care achieving 5 A*-C GCSEs (or equivalent) at Key Stage 4 (including English and Maths)

Interpretation: good performance is typified by a higher percentage

Data On Previous Years	2008/09	2009/10*
Newcastle	15.0	18.0
Statistical Neighbours		-
England		-
Gap (Newcastle - England)		-
Gap (Newcastle - stat.neigh.)		-



Newcastle Children's Services Performance Profile: historical data

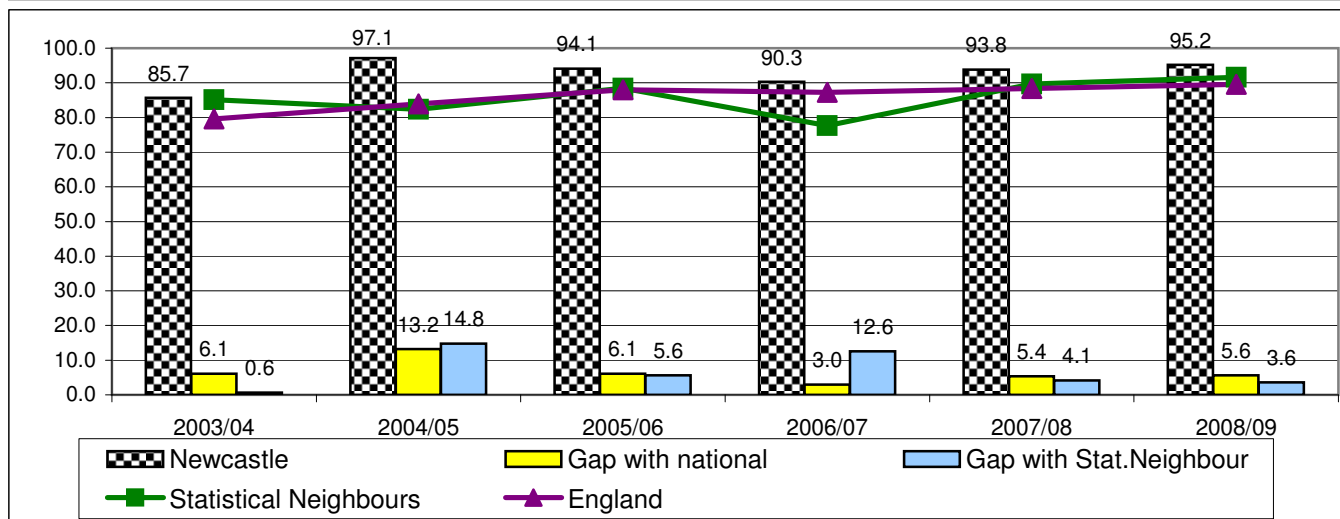
Every Child Matters indicators: National Indicator Set for Staying Safe

Local Authority: Newcastle upon Tyne Reporting Date: 31st December 2009

NI 147 Care leavers in suitable accommodation (5037SC)

Interpretation: good performance is typified by positive increase in percentages

Data On Previous Years	2003/04	2004/05	2005/06	2006/07	2007/08	2008/09	2009/10*
Newcastle	85.7	97.1	94.1	90.3	93.8	95.2	
Statistical Neighbours	85.1	82.3	88.5	77.7	89.7	91.6	
England	79.6	83.9	88.0	87.3	88.4	89.6	
Gap (Newcastle - England)	6.1	13.2	6.1	3.0	5.4	5.6	
Gap (Newcastle - stat.neigh.)	0.6	14.8	5.6	12.6	4.1	3.6	



NI 148 Care leavers in employment, education or training (PAF CF/A4)

Interpretation: good performance is typified by positive increase in percentages

Data On Previous Years	2003/04	2004/05	2005/06	2006/07	2007/08	2008/09	2009/10*
Newcastle	54.8	68.6	58.8	77.4	62.5	73.8	
Statistical Neighbours	52.0	54.7	64.3	58.3	68.9	69.7	
England	55.4	58.4	62.8	62.7	64.9	63.0	
Gap (Newcastle - England)	-0.6	10.2	-4.0	14.7	-2.4	10.8	
Gap (Newcastle - stat.neigh.)	2.8	13.9	-5.5	19.1	-6.4	4.1	

